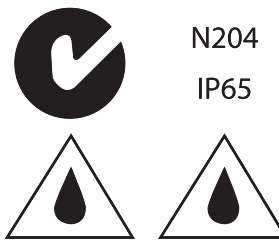


# GREENLIGHT



## APPROVALS AND SPECIFICATIONS



## DESCRIPTION

- Class 1 exterior luminaire
- Rated Voltage: 198-254V, 50-60Hz, DC 176-254V
- Body Material: LM20 Marine grade cast aluminium
- Diffuser Material: Acrylic, attached by 6 S/S spring clips
- IP Rating: Lamp and gear IP65, Terminal IP24
- Operating Environment: Road and area lighting

## FEATURES

- Specifically designed to meet the requirements for residential road lighting standards
- A compact and aesthetic modern fitting
- Made with a die-cast aluminium body and a clear acrylic diffuser
- Utilises T5 fluorescent technology offering energy savings over conventional Mercury Vapour lamps
- Available with PE cell

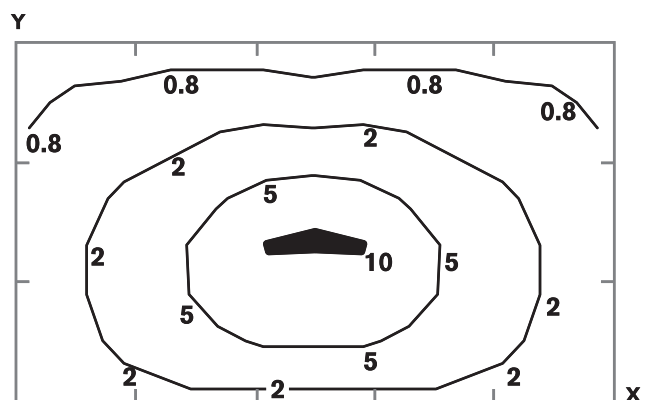
## MOUNTING

- Luminaire is to be mounted on a 27mm to 35mm OD (20mm to 25mm NB) spigot

## APPLICATIONS

- Suburban roads
- Driveways
- Walkways
- Security Lighting

## PHOTOMETRIC DESIGN DATA



### Horizontal illumination - GL 2x14T5

Mounting height - 5.0m

X increments - 5.0m

Plane height - 0.0m

Windage - 0.117m<sup>2</sup>

Area - 25m x 15m

Y increments = 5.0m

Aiming angle - 5°

Weight - 2.8kg